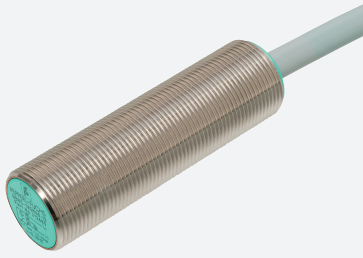


Inductive analog sensor

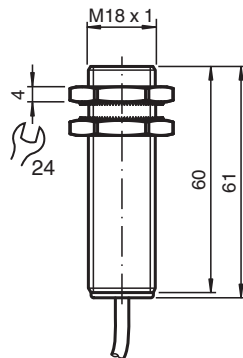
NBB5-18GM60-I3



- Inductive analog
- Output 0 mA ... 20 mA
- Flush mounting



Dimensions



Technical Data

General specifications			
Output type			Analog current output
Installation			flush
Output polarity			DC
Measurement range			1 ... 5 mm
Output type			3-wire
Nominal ratings			
Operating voltage	U_B		10 ... 30 V DC typ. 20 V DC
Reverse polarity protection			yes
Repeat accuracy			0 ... 80 μ m
No-load supply current	I_0		\leq 12 mA
Analog output			
Output type			0 ... 20 mA
Slope of output characteristic			5 mA / mm
Linearity error			$\leq \pm 5$ % of full-scale value
Load resistor			\leq 1000 Ω typ. 500 Ω
Rate of current rise			

Release date: 2022-05-30 Date of issue: 2022-05-30 Filename: 303096_eng.pdf

Refer to "General Notes Relating to Pepperl+Fuchs Product Information".

Pepperl+Fuchs Group
www.pepperl-fuchs.com

USA: +1 330 486 0001
fa-info@us.pepperl-fuchs.com

Germany: +49 621 776 1111
fa-info@de.pepperl-fuchs.com

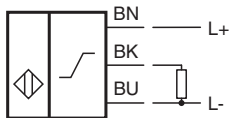
Singapore: +65 6779 9091
fa-info@sg.pepperl-fuchs.com

PEPPERL+FUCHS

Technical Data

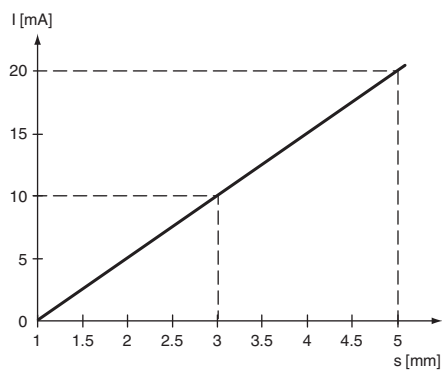
0 ... 20 mA	max. 38.9 A/s
20 ... 0 mA	max. 13.9 A/s
Recovery time	1 ... 10 ms , typ. 5 ms
Adjustment tolerance zero point	$\leq \pm 5$ % of full-scale value
Temperature drift	$\leq \pm 0.15$ %/K of full-scale value
Residual ripple	± 125 μ A
Compliance with standards and directives	
Standard conformity	
Standards	EN 60947-5-2:2007 IEC 60947-5-2:2007 EN 60947-5-7:2003 IEC 60947-5-7:2003
Approvals and certificates	
UL approval	cULus Listed, Class 2 Power Source
CCC approval	CCC approval / marking not required for products rated ≤ 36 V
Ambient conditions	
Ambient temperature	-25 ... 70 °C (-13 ... 158 °F)
Mechanical specifications	
Connection type	cable PVC , 2 m
Core cross section	0.5 mm ²
Housing material	brass, nickel-plated
Sensing face	PBT
Degree of protection	IP67
Cable	
Cable diameter	4.6 mm \pm 0.2 mm
Bending radius	> 10 x cable diameter

Connection



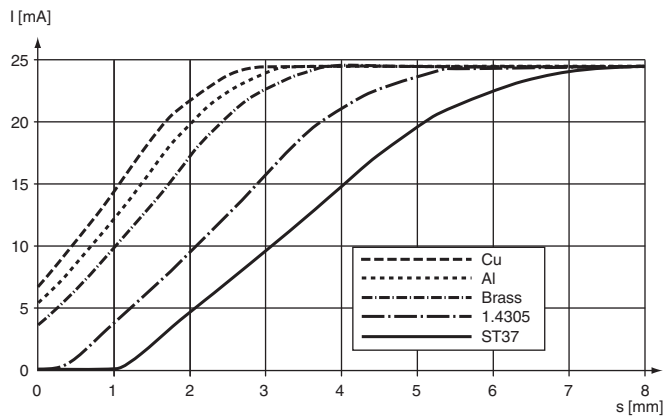
Characteristic Curve

Output characteristics




Characteristic Curve

Reduction factor



Accessories

	<p>BF 18</p>	<p>Mounting flange, 18 mm</p>
---	---------------------	-------------------------------

Release date: 2022-05-30 Date of issue: 2022-05-30 Filename: 303096_eng.pdf