



### Model Number

NCB15+U1+N0

### Features

- Comfort series
- 15 mm flush

## Technical Data

### General specifications

Switching element function		NAMUR, NC
Rated operating distance	$s_n$	15 mm
Installation		flush
Output polarity		NAMUR
Assured operating distance	$s_a$	0 ... 12.15 mm
Reduction factor $r_{Al}$		0.28
Reduction factor $r_{Cu}$		0.25
Reduction factor $r_{304}$		0.75

### Nominal ratings

Installation conditions		
A		5 mm
B		
C		
Nominal voltage	$U_o$	8 V
Switching frequency	f	0 ... 400 Hz
Hysteresis	H	1 ... 15 typ. 5 %
Reverse polarity protection		reverse polarity protected
Short-circuit protection		yes
Current consumption		
Measuring plate not detected		$\geq 3$ mA
Measuring plate detected		$\leq 1$ mA
Switching state indicator		LED, yellow

### Standard conformity

EMC in accordance with	IEC / EN 60947-5-2:2004; NE 21
Standards	DIN EN 60947-5-6 (NAMUR)

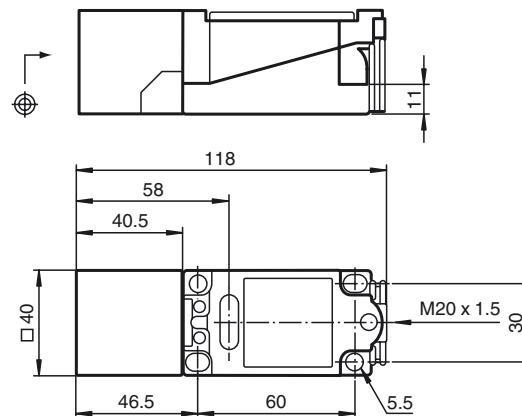
### Ambient conditions

Ambient temperature	-25 ... 100 °C (-13 ... 212 °F)
Storage temperature	-40 ... 100 °C (-40 ... 212 °F)

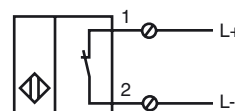
### Mechanical specifications

Core cross-section	up to 2.5 mm <sup>2</sup>
Housing material	PBT
Sensing face	PBT
Degree of protection	IP68

## Dimensions



## Electrical Connection



**ATEX**

Data for Ex areas

Effective internal inductivity	$C_i$	$\leq 110 \text{ nF}$
Effective internal inductance	$L_i$	$\leq 160 \mu\text{H}$

Release date: 2015-02-24 11:07 Date of issue: 2015-02-25 03:46:04\_eng.xml